



**7W Farms KKA Camelot**



**Dam: Buffalo Clover NIK Lady Lake 3\*M 1\*D**



**Sire: Legacy Ranch Kind King Asa \*B**



**DD: SG Buffalo Clover Lady Diana 2\*M  
Linear Appraisal: 2012 + + + + 84  
2013 VE V V 88 2014 VEE + 88**



**DS: CH Castle Rock In The Nik OfTime  
LA 2019 AEE 84**



**SD: Zanzabeez Blu Kind-Leigh 1\*M +VVA 81**



**SS: SGCH Proctor Hill Farm KA Kingspear +B  
EEE 92 \*ELITE**

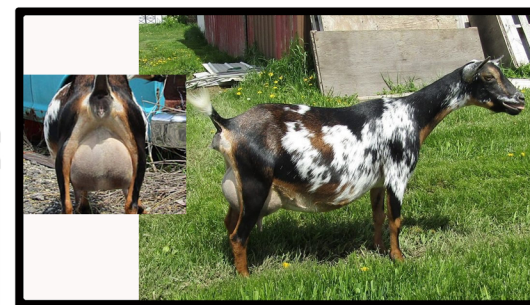


**DDD: PGCH Buffalo Clover Princess \*D  
5 x GCH Senior Doe  
4 x RsCH Senior Doe  
7 x Best Udder**

**2010 ADGA National Show: 5th Place in 5-6-year-old class  
2008 NDGA National Show: CH Senior Doe**



**DSD: CH Castle Rock Nikita, EEEE 91**



**SDD: Zanzabeez CC Stay Order-Leigh**



**SSD: SG Proctor Hill Farm Bo Mercedes ++V+ 83**



**No photo found yet**

**DDS: Buffalo Clover Euro**



**DSS: Castle Rock Triumph \*B \*S**



**SDS: Zanzabeez BB On A Blue Bayou +B**

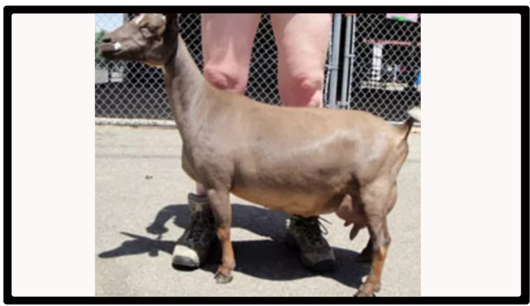


**SSS: Dragonfly G Mighty King Asa \*B**

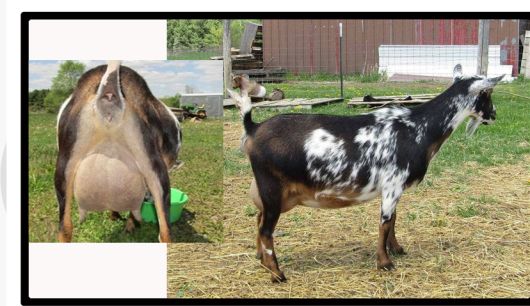


**No photo found yet**

**DDDD: Bluebonnet Farm Baby Ruth**



**DSDD: SGCH Castle Rock Annika 2\*M  
VEEV 88**

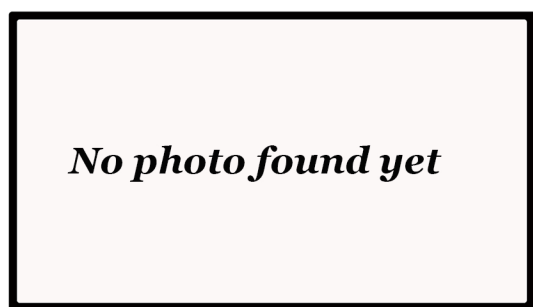


**SDDD: Zanzabeez B Quick-Leigh**



**No photo found yet**

**SSDD: Dragonfly IH Jaguar**



**No photo found yet**

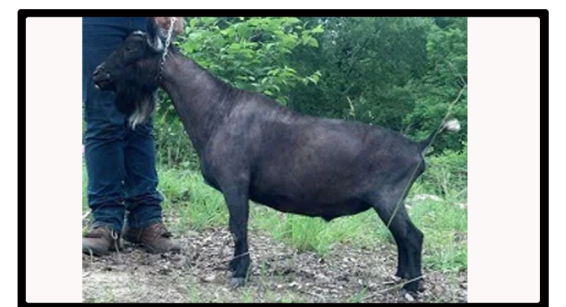
**DDDS: Woodhaven Farms Patriot**



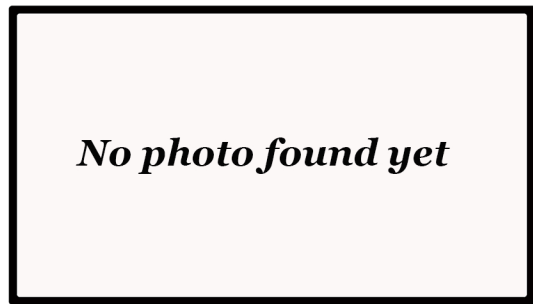
**DSDS: SG Castle Rock Cleveland Sage +\*B**



**SDDS: Zanzabeez ZSR Crowd Control**

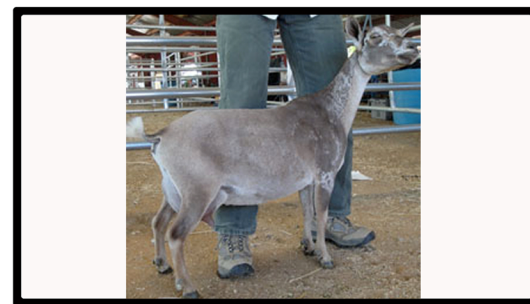


**SSDS: SG NC PromisedLand RB Bolero \*S\*B +EV8  
ADGA Elite Buck 2015 2016**

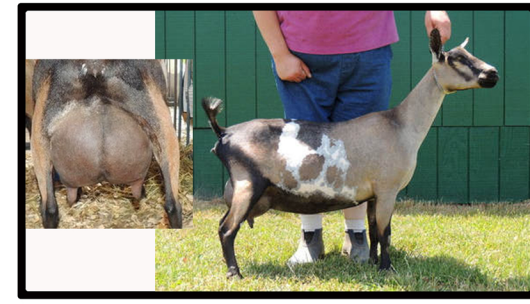


**No photo found yet**

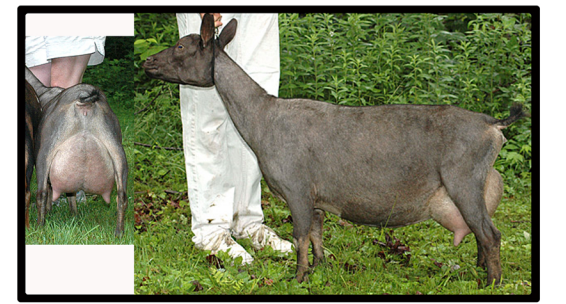
**DDSD: GCH/MCH Bluebonnet Farm Jeannie**



**DSSD: GCH AGS CRF Castle Rock Tesla 2\*M 5\*D  
3 X Grand Champion  
1 X Reserve Grand Champion  
2 X Best Udder  
2010 LA: ++VV86 2011 LA: VVVE 87  
2012 LA: VVEE 90 2015 LA: VVEE 89**



**SSDS: Zanzabeez BC at The Rivers End**



**SSSD: SG Twin Creeks AH Chiaroscuro 3\*D E 91.0**



**No photo found yet**

**DDSS: MCH Woodhaven Farms Krugerrand**



**DSSS: SG Fairlea Barnaby Rudge +\*B**



**SDSS: Tiny Starz Black Beard**



**SSSS: ARMCH Twin Creeks BW Giacomo Puccini  
+\*S+B E 90.4**